

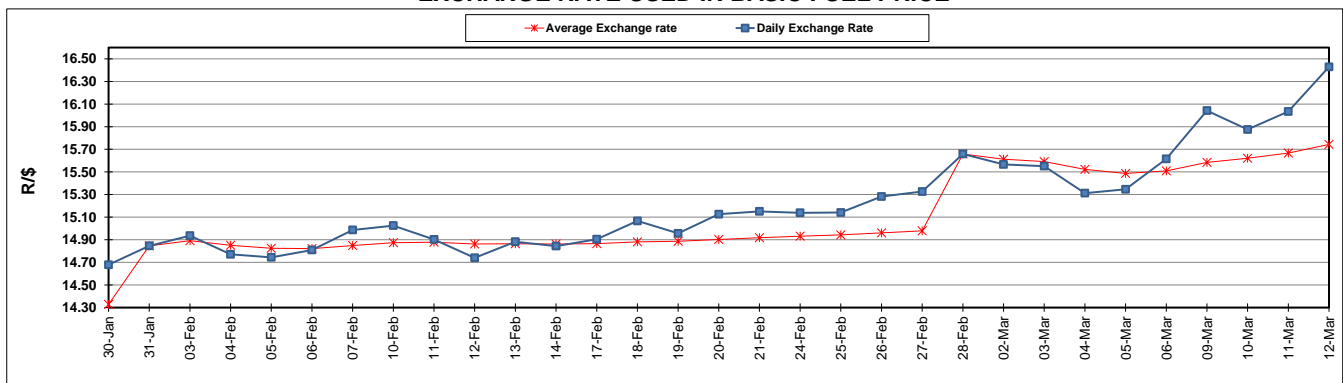
	PETROL 95 ULP	PETROL 93 ULP & LRP	DIESEL 0.05%	DIESEL 0.005%	ILL. PAR.
GAUTENG PUMP PRICE (SA c/l) AS FROM 04/03/2020	1,584.000	1,552.000	-	-	-
WHOLESALE PRICE (SA c/l) AS FROM 04/03/2020	-	-	1,403.260	1,408.660	856.728
SINGLE NATIONAL MAXIMUM RETAIL PRICE	-	-	-	-	1,085.000
BASIC FUEL PRICE - 12/03/2020 (SA c/l)	438.607	428.720	507.894	510.896	481.208
PRESS RELEASE CONTRIBUTION TO BFP 04/03/2020 - 12/03/2020 (SA c/l)	667.970	645.970	683.630	689.030	666.128
UNIT OVER/(UNDER) RECOVERY - 12/03/2020 (SA c/l)	229.363	217.250	175.736	178.134	184.920
AVERAGE BASIC FUEL PRICE 28/02/2020 - 12/03/2020	562.189	550.529	588.912	592.643	568.376
AVERAGE UNIT OVER/(UNDER) RECOVERY 28/02/2020 - 12/03/2020	111.481	101.141	110.918	112.588	118.152

ANALYSIS MOVEMENT OF AVERAGE OVER/(UNDER) RECOVERY

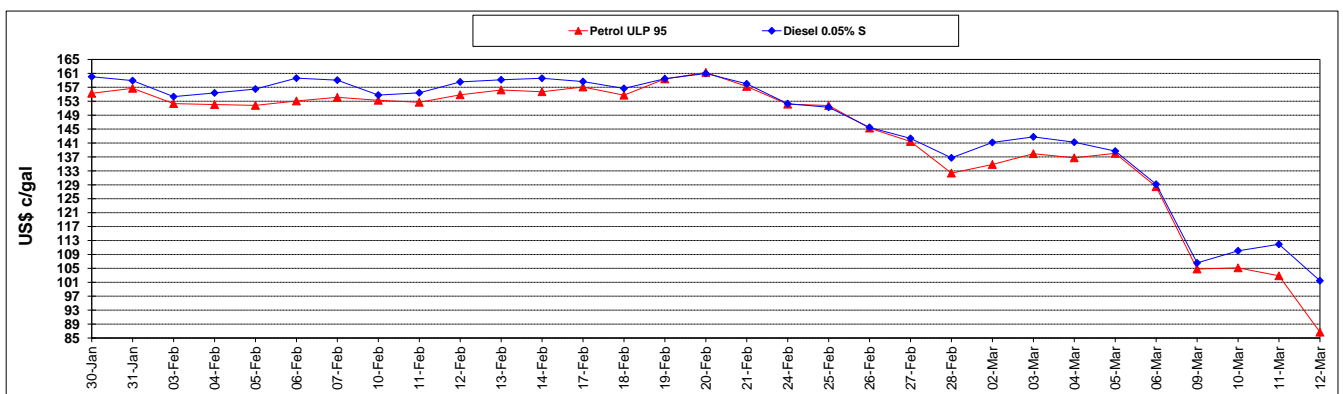
	PETROL 95	PETROL 93	DIESEL 0.05%	DIESEL 0.005%	ILL. PAR.
- MOVEMENT IN INTERNATIONAL PRODUCT PRICES	138.771	127.865	139.505	141.355	145.742
- MOVEMENT IN EXCHANGE RATE	(27.290)	(26.724)	(28.587)	(28.768)	(27.590)
AVERAGE UNIT OVER/(UNDER) RECOVERY 28/02/2020 - 12/03/2020	111.481	101.141	110.918	112.588	118.152

R/\$ EXCHANGE RATE - (R/\$ 16.4294 - 12/03/2020)

EXCHANGE RATE USED IN BASIC FUEL PRICE



INTERNATIONAL PRODUCT PRICES OF BASKET USED IN BASIC FUEL PRICE



BASIC FUEL PRICE IN SA CENTS PER LITRE

